



ANALYTIC EDGE SOLUTIONS

Shaping Futures



COMPANY
PROFILE

✉ info@aedges.com

☎ +254 711 274176

🌐 www.aedges.com



Data is the new raw material for shaping the future. Like crude oil, it's valuable, but only when refined and transformed can it become the fuel for progress, innovation, and the creation of a better tomorrow.

— Adapted from Clive Humby

Contents

- **About Us**
- **Our Purpose**
- **Core Values**
- **Commitment to Clients**
- **Brand Network**
- **Services**
 - a. Consultancies in Data Science & Digital Solutions
 - b. Ecological Studies
 - c. Environmental, Social Impact Assessment
 - d. Environmental Audit
 - e. Project Feasibility Studies
 - f. Conduct Socioeconomic Surveys
 - g. Economic Valuation and Assessments
 - h. Opinion Polls
 - i. Earth Observation (EO) and GIS
 - j. Modelling and Programming
- **Corporate Social Responsibility**
- **Future Plans**
- **Contact Information**

The services outlined in this proposal are subject to availability and may be adjusted periodically. All services and equipment are governed by ANALYTIC EDGE SOLUTIONS LIMITED's standard contract terms. This document does not constitute a contract and is unpublished. Unauthorized reproduction or distribution of its content or intellectual property is prohibited without prior written consent from ANALYTIC EDGE SOLUTIONS LIMITED.

While efforts are made to ensure accuracy, EDGE SOLUTIONS LIMITED is not liable for errors or omissions. Trademarks and product names mentioned herein are acknowledged. The document is treated as Commercial-in-Confidence and is subject to potential future contract terms.





About Us

At AnalyticEdge Solutions Limited, we are more than just a company; we are a dynamic force in the world of data science, driven by an unwavering passion for innovation and a profound commitment to advancing the possibilities that data holds. We don't just provide services; we are a beacon of knowledge, insights, and innovative solutions that illuminate the path to success for our valued clients.

Our Purpose

Our journey began with a clear and inspiring purpose: to harness the transformative power of data science to solve complex problems, inspire new possibilities, and drive progress. Data, to us, is not just information; it's a source of boundless potential, waiting to be unlocked.



Our Core Values

Our core values define who we are and guide our endeavors:

Timeliness: We understand that time is of the essence. Our commitment to delivering solutions promptly sets us apart.

Unconventional: We embrace innovation and push boundaries to provide solutions that are truly extraordinary.

Client-centric: Your success is our priority. We are dedicated to understanding your unique needs and delivering tailored solutions.

Inclusion: We believe in diversity and inclusion, fostering a collaborative environment where all voices are heard.

Pragmatic: Our approach is practical and results-driven. We provide solutions that work in the real world.

Our Commitment to Clients

At AnalyticEdge Solutions Limited, we are unwavering in our commitment to our clients.

Our promise is simple yet powerful: we deliver solutions in a timely fashion and ensure that every investment you make with us brings you exceptional value for your money.



Our Brand Network

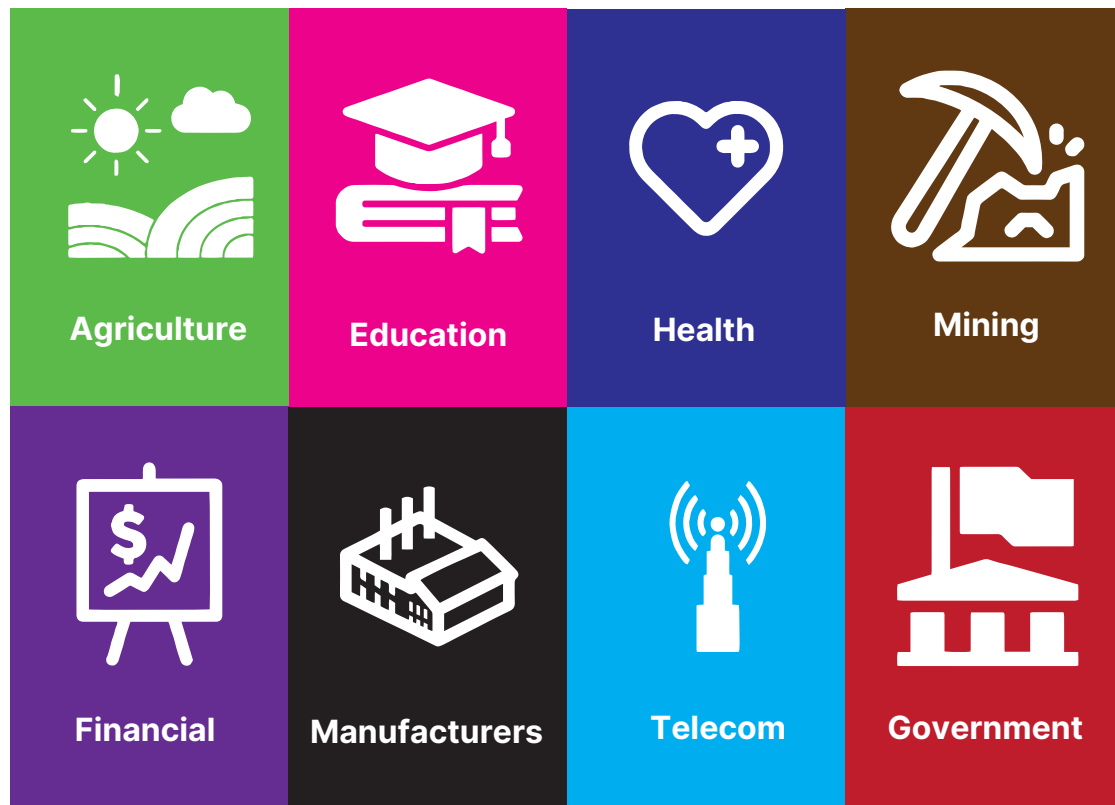
At AnalyticEdge Solutions Limited, our brand network is the backbone of our ability to deliver cutting-edge services and transformative solutions. We leverage a wide array of advanced software and tools, carefully selected for their precision, reliability, and adaptability. Our commitment to using the latest technology allows us to excel in providing top-notch services that cater to a diverse range of needs and challenges.



Markets we Serve

Our clientele includes individuals, corporate entities, academia, research institutions, marketing companies, and technology companies. We cater to a wide spectrum of sectors and industries.



Our Services

- a. Consultancies in Data Science & Digital Solutions**
- b. Ecological Studies**
- c. Environmental, Social Impact Assessment**
- d. Environmental Audit**
- e. Project Feasibility Studies**
- f. Conduct Socioeconomic Surveys**
- g. Economic Valuation and Assessments**
- h. Opinion Polls**
- i. Earth Observation (EO) and GIS**
- j. Modelling and Programming**



a. Consultancies in Data Science and Digital Solutions

Our Data Science and Digital Solutions

consultancy is at the forefront of innovation, harnessing the latest technologies and advanced analytics to empower individuals and corporations with the full potential of their data. From predictive modelling to cutting-edge machine learning, we offer expert guidance to drive data-centric decision-making.

b. Ecological Studies

Within our Ecological Studies division, we conduct in-depth research to comprehend and safeguard the natural world. Employing sophisticated tools and field research, we delve into the intricate ecosystems and environmental impacts, providing crucial insights that underpin conservation and sustainability efforts.





c. Environmental, Social Impact Assessment

Our Environmental and Social Impact Assessment services are dedicated to evaluating the repercussions of projects on the environment and society. Navigating clients through complex regulatory frameworks, we ensure the integration of sustainable practices into their operations.



d. Environmental Audit

Our Environmental Audits are characterized by their meticulous scrutiny of environmental performance. With a focus on compliance, we pinpoint areas for enhancement and offer pragmatic solutions to minimize environmental footprints.





e. Project Feasibility Studies

Our Project Feasibility Studies provide an exhaustive examination of potential ventures. We delve deep into market dynamics, cost structures, and risk factors, equipping clients with the insights needed to make informed decisions and attract investments.

f. Conduct Socio-economic Surveys

Specializing in Socioeconomic Surveys, we unravel valuable insights into communities and markets. Our surveys are meticulously designed to assist clients in deciphering demographic trends, consumer behaviors, and the dynamics of societies.



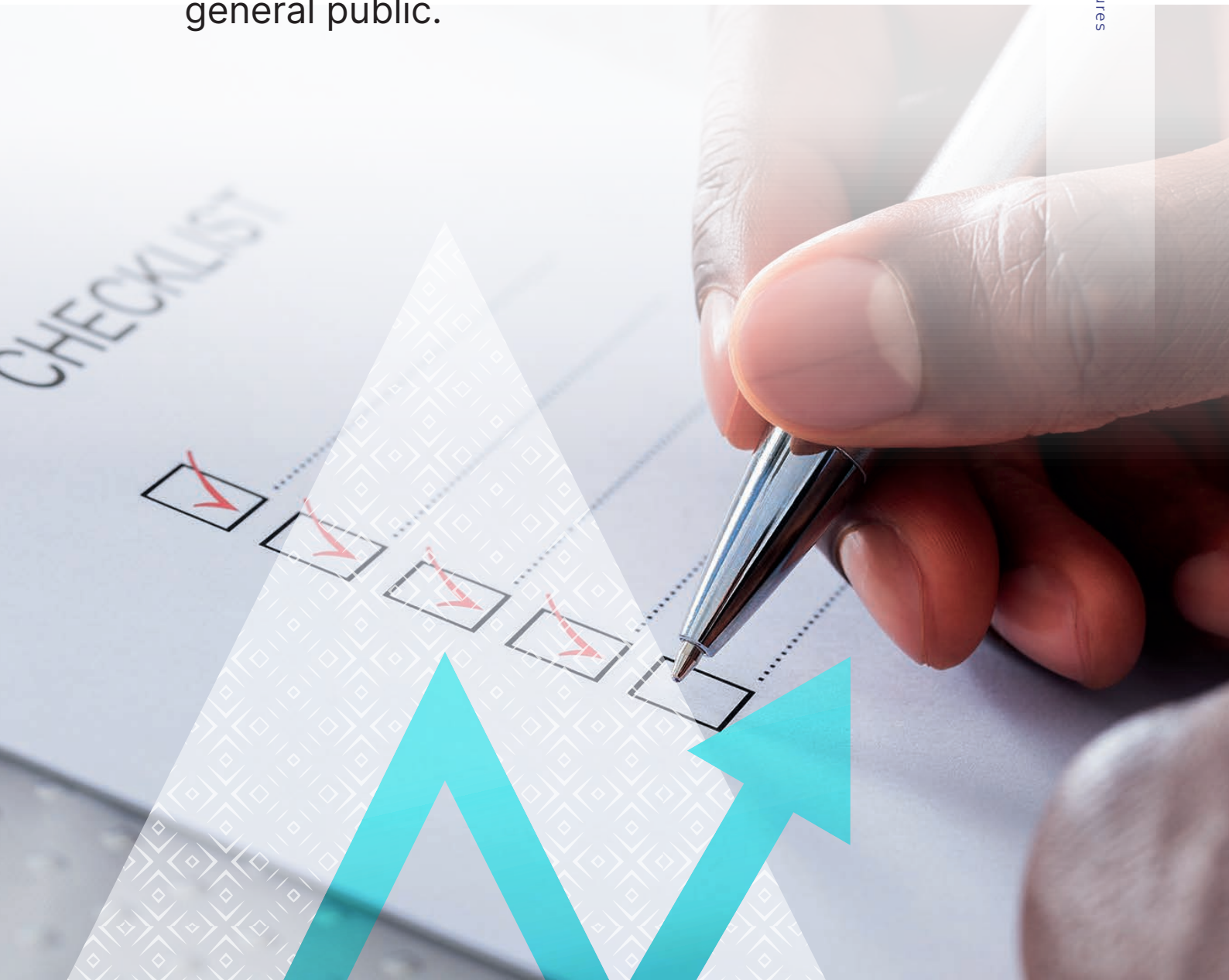


g. Economic Valuation and Assessments

The Economic Valuation and Assessments team is skilled in quantifying economic impacts. We evaluate projects, policies, and assets to discern their true economic worth and provide well-informed recommendations.

h. Opinion Polls

Renowned for their precision and depth, our Opinion Polls span the realms of consumer preferences, and social issues. We furnish valuable data and insightful analyses that inform the decisions of both key stakeholders and the general public.



A globe showing the Indian subcontinent and surrounding regions, overlaid with a semi-transparent blue map. A large white arrow points from the bottom left towards the top right, passing over the globe.

i. Earth Observation (EO) and GIS

Proficiency in Earth Observation (EO) and Geographic Information Systems (GIS) is our hallmark. Utilizing satellite data and advanced spatial analysis, we drive informed land management decisions, facilitate disaster response, and enhance various facets of decision-making.

j. Modelling and Programming

Our Modelling and Programming services encompass a wide spectrum of solutions.

Ranging from custom model creation to the development of sophisticated software applications, we tackle complex problems with innovative approaches, including predictive modelling and data-driven applications.



Corporate Social Responsibility

We are committed to making a positive impact on our community and the world. Our corporate social responsibility initiatives include environmental awareness creation, awareness campaigns, leveraging technology for solutions, equipping learning institutions, charity, and mentorship.



Future Plans

Our vision for the future involves diversifying our service portfolio, expanding internationally, and attracting top talent in data science, environmental sciences, and IT security through competitive recruitment. We also plan to invest in continuous skill development and training programs and explore the possibility of public listing.

At AnalyticEdge Solutions Limited, we invite you to join us on this exciting journey of data-driven excellence. Together, we will transform your challenges into opportunities and pave the way for a brighter future.



Contact Us Through:

  +254711274176

 info@aedges.com

 www.aedges.com

X    @aedges

 Kogello 19, Busia Road, Milimani, Kisumu, Kenya

SCANTO
CALL US
NOW!

